

# Pullman Auckland Room Types

Situated on a ridge-top in Auckland's Central Business District, all guestrooms and suites enjoy stunning views of the Auckland Harbour or Albert Park.

The hotel provides easy access to all facilities, including The Cafe, The Lobby Bar and Spa at the Pullman - a luxury health club, spa and lifestyle centre, comprising of a fully equipped gym 25m heated swimming pool, sauna, steam room, whirlpool, an outdoor sun terrace.

## Pullman Tower

### SUPERIOR KING VIEW

Enjoy natural light and contemporary furnishings. Designed for comfort and convenience, the inviting décor welcomes you with either king or twin beds, a work area offering wireless internet, a marble bath, a 32" TV and refrigerator.



Room Size: 25 sqm

### EXECUTIVE KING VIEW

Bedroom layout is the same as Superior King View. The lounge area has new furnishings created specially for these rooms by New Zealand's top designer. 42" TV's have been installed and all rooms in the Tower have wireless internet.



Room Size: 44 sqm

## Pullman Residences

### RESIDENCE SUPERIOR

Relax on your private 7sqm balcony with modern decor and warm wood furnishings, complemented by deluxe amenities, including a king bed with a plush duvet, a refrigerator, a generous work area with wireless internet access, a marble bath with soaking tub and a walk-in shower.



Room Size: 31 sqm (7 sqm balcony)

## RESIDENCE ONE OR 2 BEDROOM SUITE

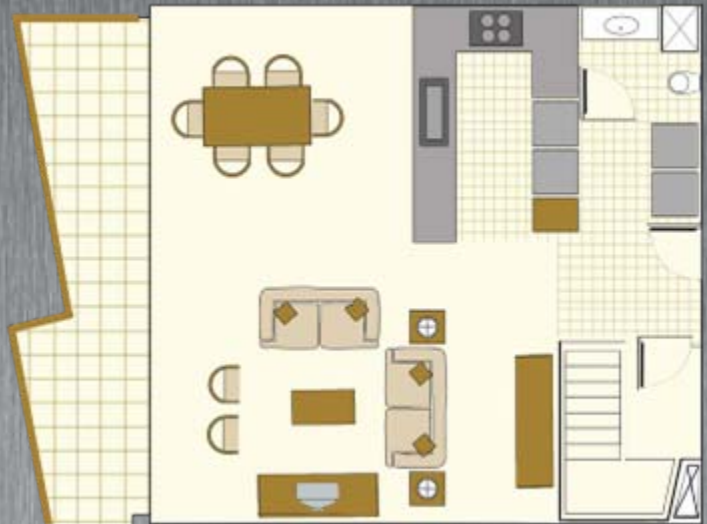
Spacious residential style room offering a 14sqm balcony and a king size bed with a plush duvet. All one bedroom suites include a kitchen, living/dining area, generous work area with wireless internet access, marble bath with separate tub and walk-in shower, and cozy robes. Connecting bedroom available for two a bedroom suite.



Room Size: 66 / 97 sqm

## RESIDENCE PENTHOUSE SUITE

Located on 17th floor, the double storied two and three bedroom penthouses include a spacious ensuite bathroom with spa bath, as well as a separate bathroom on the upper level. The kitchen, spacious living and dining room are located on the lower level of the penthouse opening onto a large balcony. All bedrooms located on the upper level.



Room Size: 133 sqm  
(21 sqm balcony)



Cnr Princes St and Waterloo Quadrant, Auckland City  
PHONE: +64 9 353 1000 FACSIMILE: + 64 9 303 3269  
pullmanauckland@accor.com

